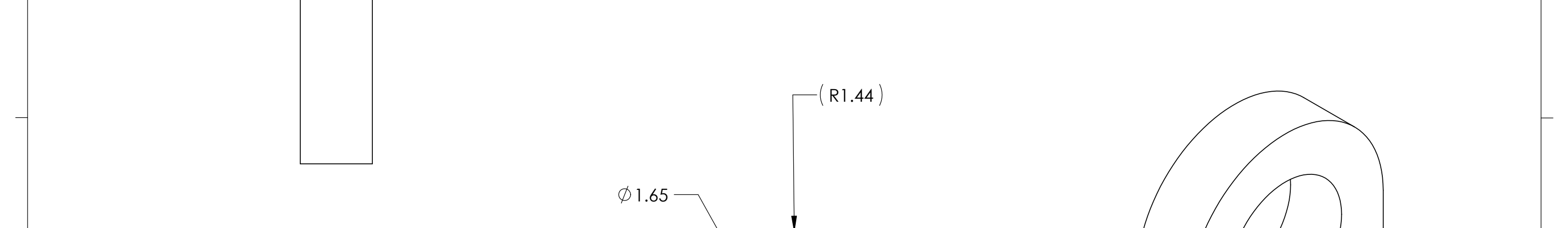


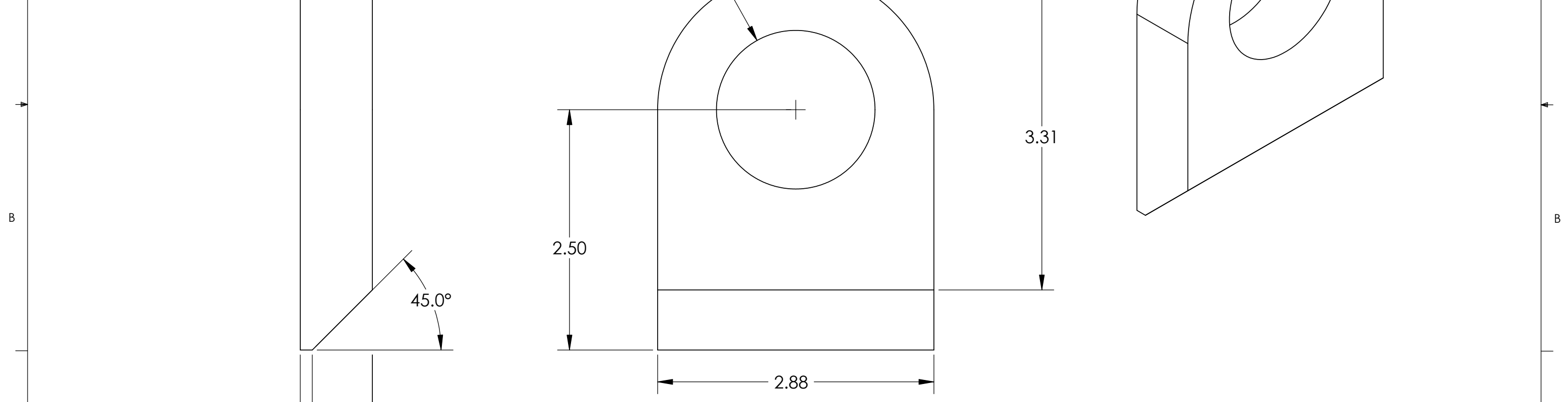
8 7 6 5 4 3 2 1

REVISIONS				
ZONE	REV.	DESCRIPTION	DATE	APPROVED

D D

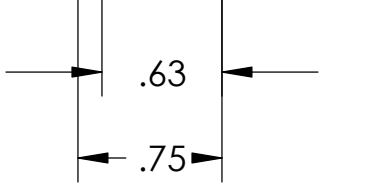


C C



B B

A A



PROPRIETARY AND CONFIDENTIAL
 THE INFORMATION CONTAINED IN THIS DRAWING IS THE SOLE PROPERTY OF KANAMAK HYDRAULICS, INC. ANY REPRODUCTION IN PART OR AS A WHOLE WITHOUT THE WRITTEN PERMISSION OF KANAMAK HYDRAULICS, INC IS PROHIBITED.

		UNLESS OTHERWISE SPECIFIED:
		DIMENSIONS ARE IN INCHES
		TOLERANCES:
		FRACTIONAL ±
		ANGULAR: MACH ± BEND ±
		TWO PLACE DECIMAL ± .06
		THREE PLACE DECIMAL ± .03
		INTERPRET GEOMETRIC TOLERANCING PER:
		MATERIAL ASTM A36
		FINISH HRS - MT
NEXT ASSY	USED ON	
APPLICATION		

	DATE	NAME
DRAWN	06-18-03	IDP
CHECKED		
ENG APPR.		
MFG APPR.		
Q.A.		
COMMENTS:		

KANAMAK HYDRAULICS, INC.		
TITLE:		
LUG 1 5/8" PIN		
SIZE	DWG. NO.	REV
B	810630	
SCALE: 1:1	WEIGHT:	SHEET 1 OF 1

8 7 6 5 4 3 2 1