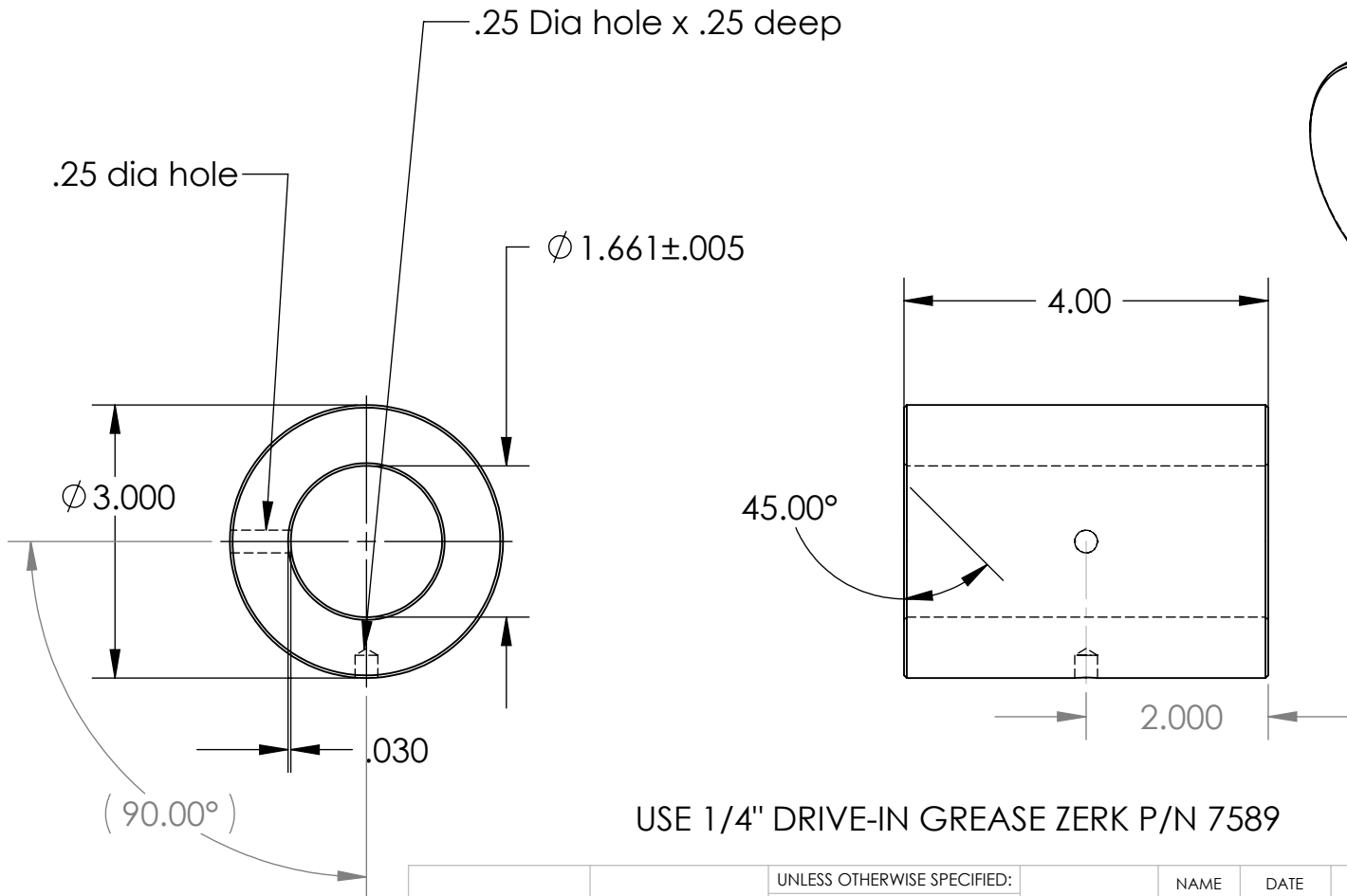


REVISIONS		DATE	APPROVED
ZONE	REV.	DESCRIPTION	



USE 1/4" DRIVE-IN GREASE ZERK P/N 7589

PROPRIETARY AND CONFIDENTIAL
 THE INFORMATION CONTAINED IN THIS DRAWING IS THE SOLE PROPERTY OF KANAMAK HYDRAULICS, INC. ANY REPRODUCTION IN PART OR AS A WHOLE WITHOUT THE WRITTEN PERMISSION OF KANAMAK HYDRAULICS, INC. IS PROHIBITED.

UNLESS OTHERWISE SPECIFIED:		NAME	DATE
DIMENSIONS ARE IN INCHES		DRAWN	KBM 12/14/2009
TOLERANCES:		CHECKED	
FRACTIONAL \pm		ENG APPR.	
ANGULAR: MACH \pm BEND \pm		QUANTITY:	1
TWO PLACE DECIMAL \pm		COMMENTS:	
THREE PLACE DECIMAL \pm			
INTERPRET GEOMETRIC TOLERANCING PER:			
MATERIAL			
DOM-1500-3000			
NEXT ASSY	USED ON		
FINISH			
APPLICATION			
DO NOT SCALE DRAWING			

KANAMAK HYDRAULICS INC		
TITLE:		
Pin Eye-Rod 1 5/8 pin		
SIZE	DWG. NO.	REV
A	810662	none
SCALE: 1:4	Weight 5.53 lb	SHEET 1 OF 1