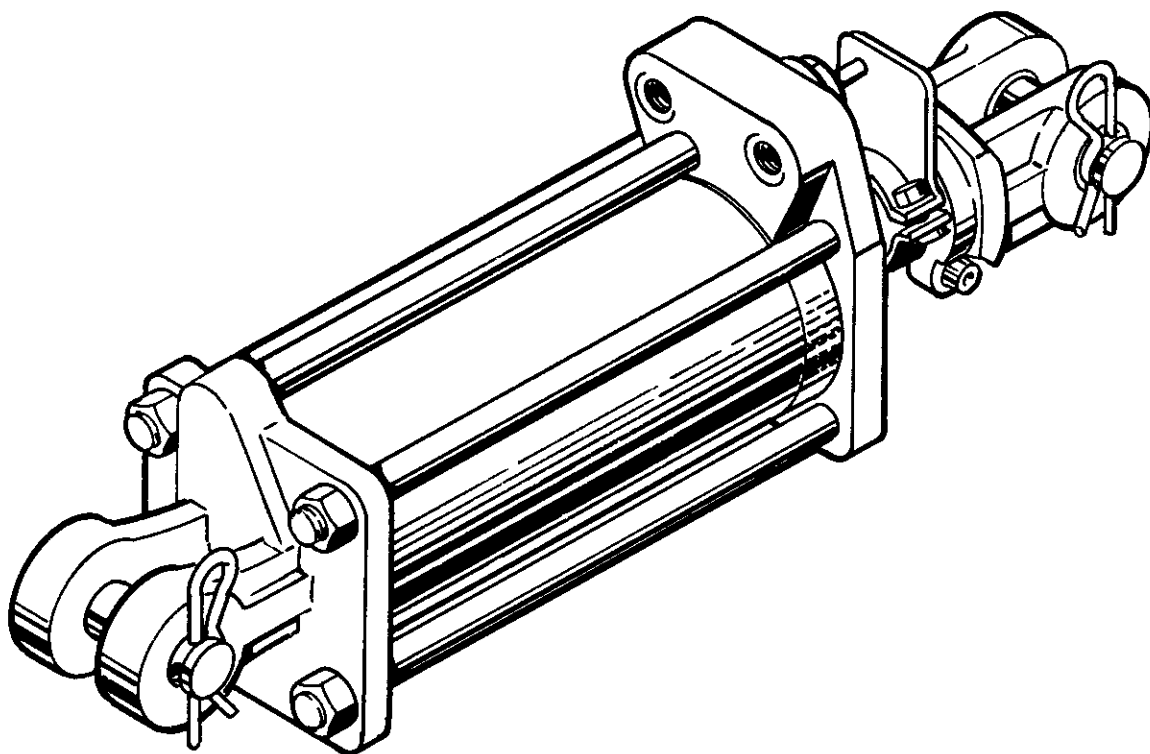


DC SERIES

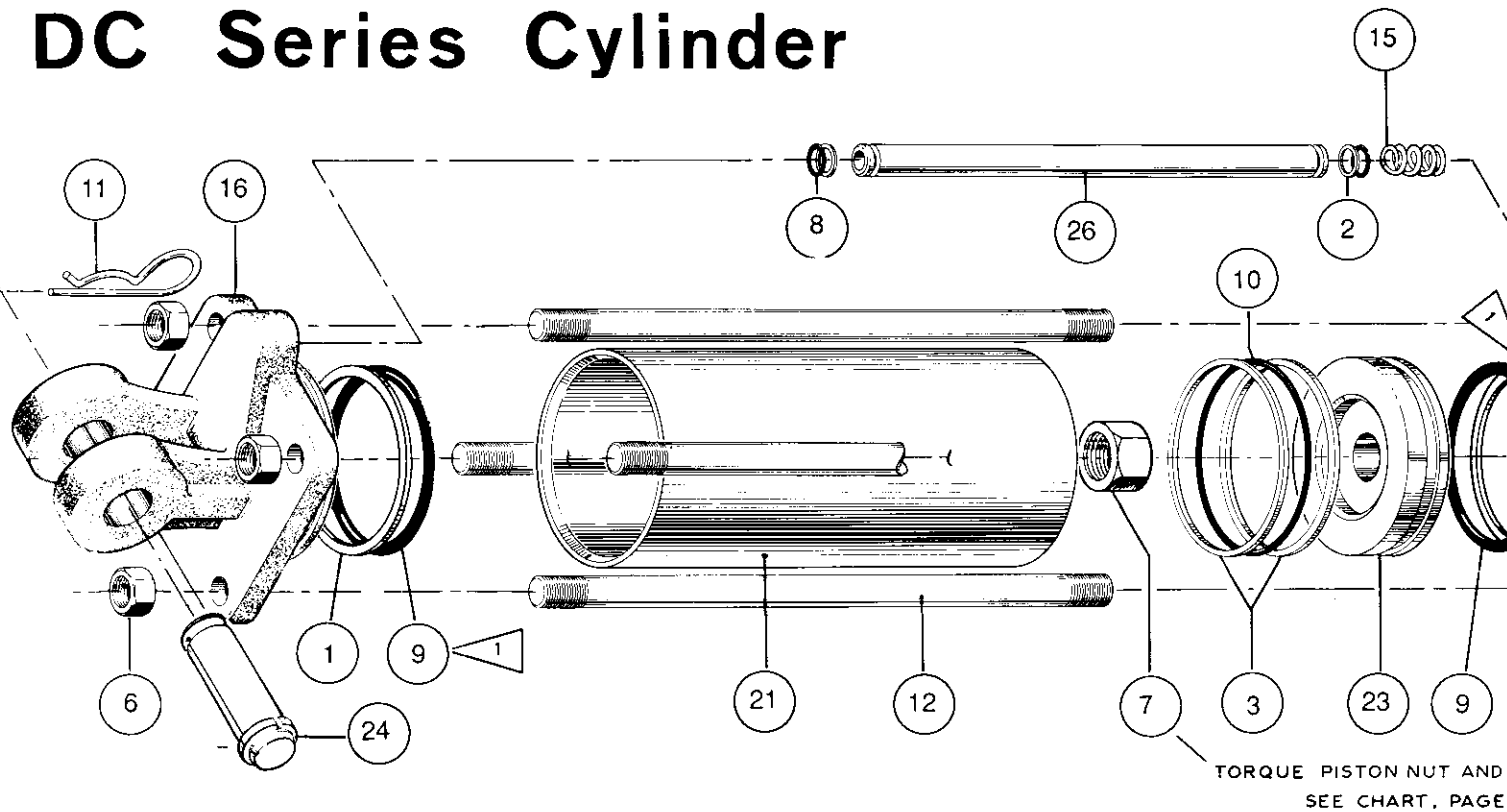
TIE ROD CYLINDER with Hydraulic Depth Control



MAY 1, 2002



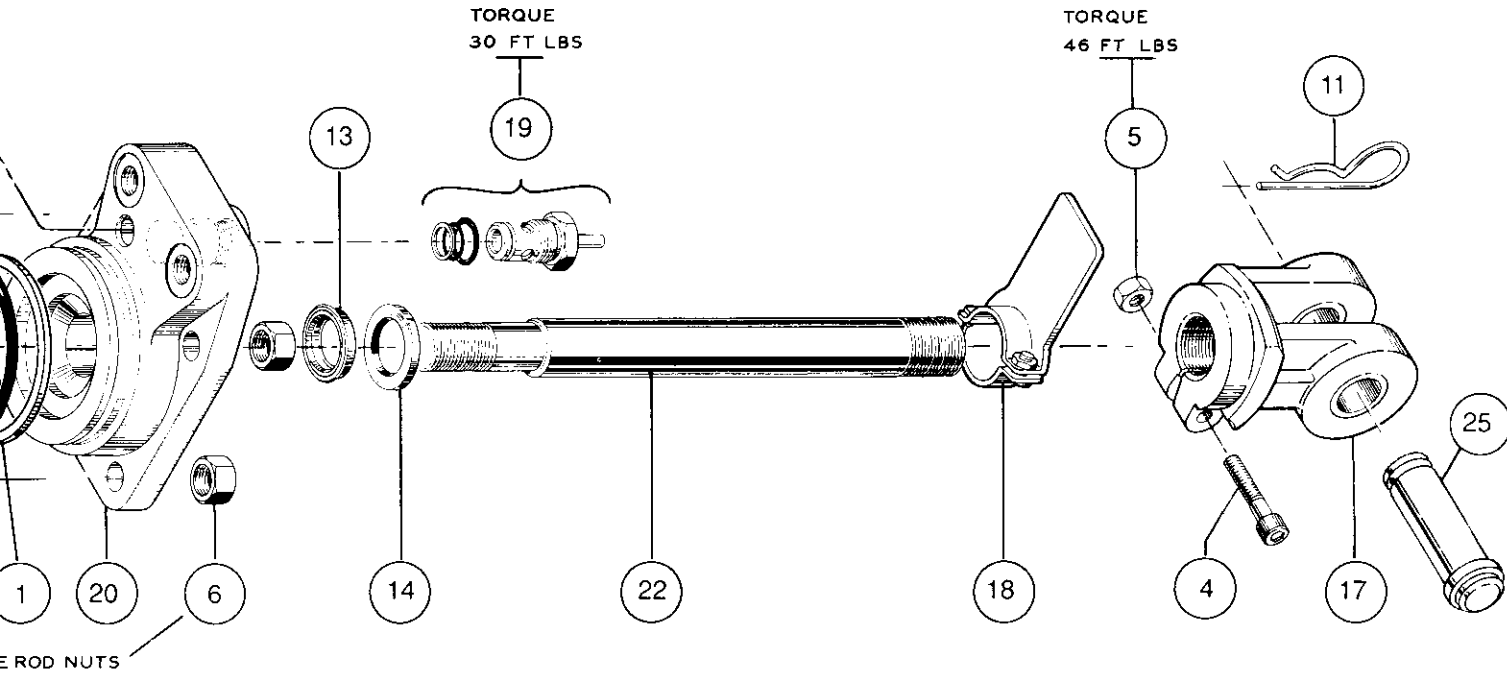
DC Series Cylinder



PARTS LIST - 8" STROKE

QTY	DESCRIPTION	3" BORE		4" BORE	4 1/2" BORE	5" BORE
		1 1/4" ROD	1 1/2" BORE	1 1/4" ROD	1 3/4" ROD	2" ROD
2	BACKUP (HEAD & BASE)	2A0007-232	2A0007-236	2A0007-240	2A0007-244	2A0007-350
2	BACKUP (FEED TUBE)	2A0010-014				
2	BACKUP (PISTON)	2A0010-334	2A0010-338	2A0010-342	2A0010-346	2A0010-425
1	CAPSCREW	2A0079-616				
1	CLEVIS NUT	2A0235-6				
8	TIE ROD NUT	2A0235-8	2A0236-9	2A0236-10	2A0236-12	
1	PISTON NUT	2A0246-16			2A0248-20	
2	O-RING (FEED TUBE)	2A0283-7014				
2	O-RING (HEAD & BASE)	2A0283-7232	2A0283-7236	2A0283-7240	2A0283-7244	2A0283-7350
2	O-RING (PISTON)	2A0283-7334	2A0283-7338	2A0283-7342	2A0283-7346	2A0283-7425
2	PIN CLIP	2A0308-1				
4	TIE ROD	2A0580-1350	2A0581-1350	2A0582-1375	2A0583-1425	2A0583-1450
1	U-CUP	2A0688-220			2A0688-128	2A0688-232
1	WIPER	2A0773-720			2A0773-1028	2A0773-1032
1	SPRING	2A9054-2				
1	BASE	2C5730	2C5742	2C5753	3C7744-2	3C8510-2
1	ROD CLEVIS ASSY	3C4549			3C6408	
1	ACTUATOR STOP ASSY	3C5185		3C5185	3C5194	3C5217
1	CARTRIDGE ASSY	3C7272				
1	HEAD (3/4-16 PORTS)	3C7295-5	3C7296-5	3C7297-5	3C7620-11	3C8592-14
1	OPT. (1/2 NPTF)	3C7295-2	3C7296-2	3C7297-2	3C7620-8	3C8592-11
1	TUBE	1D0007-1012	1D0009-1012	1D0011-1012	1D0013-1050	1D0015-1062
1	ROD	1D0207-1462		1D0207-1462	1D0472-1462	1D0474-1438
1	PISTON	1D1402-300	1D1401-350	1D1401-400	3C8724	3C5218
1	PIN (BASE CLEVIS)	1D1582-16300			1D1582-20325	1D1582-20375
1	PIN (ROD CLEVIS)	1D1582-16300			1D1582-20300	1D1582-20300
1	FEED TUBE	1D1980-1125			1D1980-1162	1D1980-1175
0	SEAL KIT	SEE CHART, PAGE 4.				
	KIT TO MODIFY EXISTING DC TOP-PORTED CYLINDER	3C7932-2	3C7933-2	1 1/4" ROD 3C7934-2		
	KIT TO CONVERT DC SIDE-PORTED CYL TO TOP-PORTED CYL	3C7503	3C7504	1 1/4" ROD 3C7505		

1 O-RING AND BACK-UP TUBE SEAL DESIGN BECAME EFFECTIVE SPRING OF 1979.



PARTS LIST - 16" STROKE

QTY	DESCRIPTION	3" BORE	3 1/2" BORE	4" BORE	4 1/2" BORE	5" BORE
		1 1/4" ROD	1 1/2" ROD	1 3/4" ROD	2" ROD	
2	BACKUP (HEAD & BASE)	2A0007-232	2A0007-236	2A0007-240	2A0007-244	2A0007-350
2	BACKUP (FEED TUBE)	2A0010-014				
2	BACKUP (PISTON)	2A0010-334	2A0010-338	2A0010-342	2A0010-346	2A0010-425
1	CAPSCREW	2A0079-616				
1	CLEVIS NUT	2A0235-6				
8	TIE ROD NUT	2A0235-8	2A0236-9	2A0236-10	2A0236-12	2A0236-12
2	PISTON NUT	2A0246-16			2A0248-20	
1	O-RING (FEED TUBE)	2A0283-7014				
2	O-RING (HEAD & BASE)	2A0283-7232	2A0283-7236	2A0283-7240	2A0283-7244	2A0283-7350
1	O-RING (PISTON)	2A0283-7334	2A0283-7338	2A0283-7342	2A0283-7346	2A0283-7425
2	PIN CLIP	2A0308-1				
4	TIE ROD	2A0580-2150	2A0581-2150	2A0582-2175	2A0583-2225	2A0583-2250
1	U-CUP	2A0688-220	2A0688-224	2A0688-128	2A0688-232	
1	WIPER	2A0773-720	2A0773-824	2A0773-1028	2A0773-1032	
1	SPRING	2A9054-2				
1	BASE	3C3697	3C2679	3C5210	3C7744-2	3C8510-2
1	ROD CLEVIS ASSY	3C5719			3C5853	
1	ACTUATOR STOP ASSY	3C5185	3C5197	3C5194	3C5217	
1	CARTRIDGE ASSY	3C7272				
1	HEAD (3/4-16 PORTS)	3C7295-5	3C7296-17	3C7297-23	3C7620-17	3C8592-14
1	OPT. (1/2 NPTF)	3C7295-2	3C7296-14	3C7297-20	3C7620-14	3C8592-11
1	TUBE	1D0007-1812	1D0009-1812	1D0011-1812	1D0013-1850	1D0015-1862
1	ROD	1D0207-2512	1D0208-2512	1D0223-2512	1D0474-2262	1D0474-2488
1	PISTON	1D1402-300	1D1401-350	1D1401-400	3C8724	3C5218
1	PIN (BASE CLEVIS)	1D1582-20300			1D1582-20375	
1	PIN (ROD CLEVIS)	1D1582-20300			1D1582-20300	
1	FEED TUBE	1D1980-1925			1D1980-1962	1D1980-1975
0	SEAL KIT	SEE CHART, PAGE 4.				
	KIT TO MODIFY EXISTING DC TOP-PORTED CYLINDER	3C7932-2	1 1/2" ROD 3C7933-14	1 3/4" ROD 3C7934-20		
	KIT TO CONVERT DC SIDE-PORTED CYL TO TOP-PORTED CYL	3C7547	1 1/4" ROD 3C8804	3C8805		

TORQUE

PISTON NUT		
	THREAD SIZE	TORQUE
	1 - 14	320 FT LBS.
	1 1/4 - 12	660 FT LBS.

TIE ROD NUT		
BORE	THREAD SIZE	TORQUE
3	1/2 - 13	75 FT LBS.
3 1/2	9/16 - 18	75 FT LBS.
4	5/8 - 18	125 FT LBS.
4 1/2	3/4 - 16	200 FT LBS.
5	3/4 - 16	200 FT LBS.

DC SEAL KITS

BORE	ROD SIZE	UNIVERSAL KIT *	OLD SEAL KIT
3.00	1.25	3C7681	2C5732
3.50	1.25	3C7682	2C5744
	1.50	3C7683	3C5193
	1.75	3C5781	—
4.00	1.25	3C7308	2C5751
	1.38	3C7969	3C4988
	1.50	3C7060	3C6055
	1.75	3C7684	3C5196
	2.00	3C8613	—
4.50	1.50	3C8721	—
	1.75	3C8614	—
	2.00	3C8714	—
5.00	1.50	3C8722	—
	1.75	3C8723	—
	2.00	3C8612	—

3C7272 DC CARTRIDGE ASSEMBLY — 3C7810 (EXTERNAL SEALS ONLY)

* CONTAINS SEALS FOR BOTH SINGLE O-RING & O-RING/BACKUP TUBE SEALS

CROSS MANUFACTURING INC. RESERVES THE RIGHT TO DISCONTINUE PRODUCTS AND/OR TO CHANGE DESIGN, SPECIFICATIONS OR PRICES AT ANY TIME WITHOUT INCURRING ANY OBLIGATIONS.

SEE FMCD02 FOR DIMENSIONS, SPECIFICATIONS AND ORDERING DATA.