

"COMPO CARE" - Pressure filters

PF



TECHNICAL DATA

ORDERING AND OPTIONS CHART

CLOGGING INDICATORS

PRESSURE DROP (Δp) CURVES

CROSS FUNCTIONAL VIEW

SPARE PARTS ORDERING INFORMATION

DIMENSIONS OF THE FILTER ELEMENT

"COMPO CARE" PRESSURE FILTERS

PF

COMPATIBILITY

Full with fluids:
 HH-HL-HM-HR-HV-HG
 (according to ISO 6743/4).
 For fluids different than the above mentioned,
 please contact our Sales Department.

PRESSURE

Max working	175 psi (12 bar)
Test	220 psi (15 bar)
Bursting	360 psi (25 bar)
Collapse, differential for the filter element	60 psi (4 bar)

BYPASS VALVE

Setting	170 kPa (1,7 bar) +/-10%
---------	-----------------------------

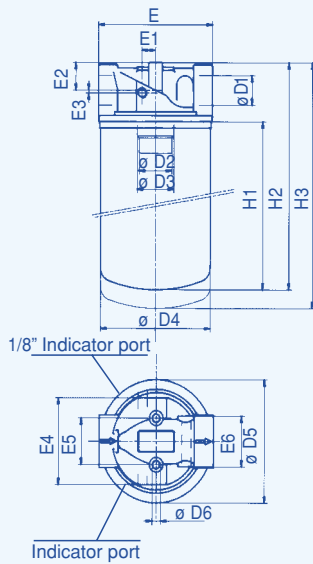
WORKING TEMPERATURE

From -25° to +110° C

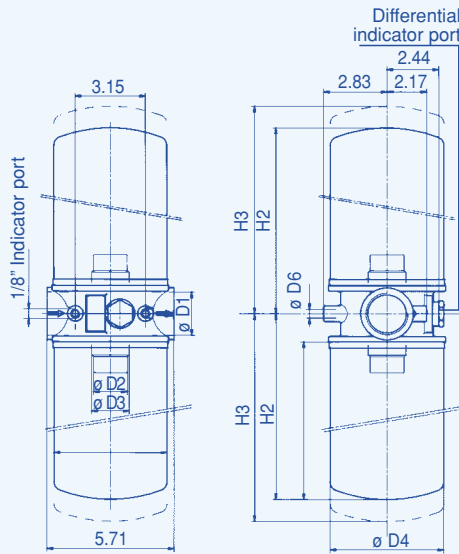
MATERIALI

Head	Aluminium alloy
Spin-on cartridge	Steel
Bypass valve	Polyamide
Seals	Nitrile (NBR) (Viton® FPM on request)
Indicator housing	Brass

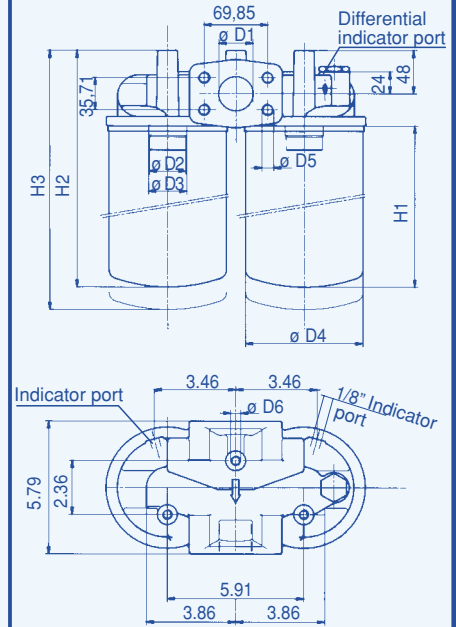
FPF 1+ & FPF 2+



FPF 3+



FPF 4+



	D1	D2	D3	D4	D5	D6	E	E1	E2	E3	E4	E5	E6	H1	H2	H3	Weig. lbs
F PF11	3/4"	1" 12 UNF	=	3.78	3.78	1/4" UNC	3.74	0.39	0.91	0.12	2.36	1.50	1.26	5.75	7.40	8.19	2.5
F PF12	3/4"	1" 12 UNF	=	3.78	3.78	1/4" UNC	3.74	0.39	0.91	0.12	2.36	1.50	1.26	7.52	9.21	10.00	3.2
F PF21	1 1/4"	1 1/2" 16-UN	1 1/4" BSP	5.08	5.28	5/16" UNC	5.24	0.57	1.18	0.12	3.70	1.97	2.13	6.93	9.49	10.67	3.2
F PF22	1 1/4"	1 1/2" 16-UN	1 1/4" BSP	5.08	5.28	5/16" UNC	5.24	0.57	1.18	0.12	3.70	1.97	2.13	10.71	13.19	14.37	4.0
F PF31	1 1/2"	1 1/2" 16-UN	1 1/4" BSP	5.08	=	3/8" UNC	=	=	=	=	=	=	=	6.93	8.23	9.41	5.9
F PF32	1 1/2"	1 1/2" 16-UN	1 1/4" BSP	5.08	=	3/8" UNC	=	=	=	=	=	=	=	10.71	12.01	13.19	7.6
F PF41	1 1/2"	1 1/2" 16-UN	1 1/4" BSP	5.08	1/2" UNC	3/8" UNC	=	=	=	=	=	=	=	6.93	10.31	15.24	8.5
F PF42	1 1/2"	1 1/2" 16-UN	1 1/4" BSP	5.08	1/2" UNC	3/8" UNC	=	=	=	=	=	=	=	10.71	14.06	15.43	10.1

PF

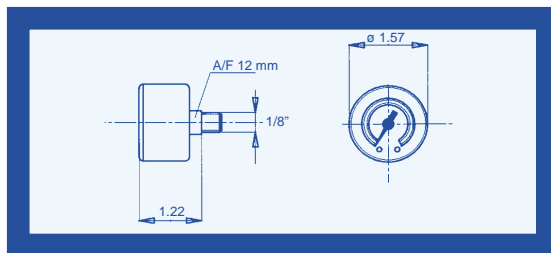
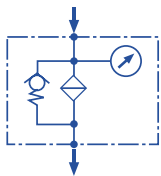
"COMPO CARE" PRESSURE FILTERS

ORDERING AND OPTIONS CHART

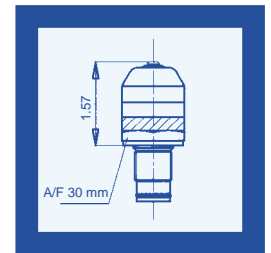
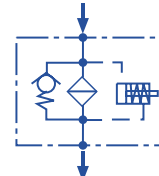
P	F	F	FILTER COMPLETE								ELEMENT		E
		FAMILY	NOMINAL SIZE & LENGTH								FAMILY		S
			11	12	21	22	31	32	41	42	SIZE & LENG.		
PORT TYPE													NOTE: ESF31+++ = nr. 2 x ESF21+++ ESF32+++ = nr. 2 x ESF22+++ ESF41+++ = nr. 2 x ESF21+++ ESF42+++ = nr. 2 x ESF22+++
N = NPT thread			N	N	N	N	N	N	N	N	N	N	
D = SAE flange 3000 psi, UNC screws			=	=	=	=	=	=	=	D	D		
PORT SIZE													
06 = 3/4			06	06	-	-	-	-	-	-	-	-	
10 = 1" 1/4			-	-	10	10	-	-	-	-	-	-	
12 = 1" 1/2			-	-	-	-	12	12	12	12	12	12	
BYPASS VALVE													
W = without			W	W	W	W	W	W	W	W	W	W	
B = 25 psi (1.7 bar)			B	B	B	B	B	B	B	B	B	B	
SEALS													SEALS
N = nitrile NBR			N	N	N	N	N	N	N	N	N	N	N = NBR
F = Viton®FPM			F	F	F	F	F	F	F	F	F	F	F = FPM
FILTER MEDIA													FILTER MEDIA
FA = fiber 3 μ β >100			FA	FA	FA	FA	FA	FA	FA	FA	FA	FA	FA = fiber 3 μ
FB = fiber 6 μ β >100			FB	FB	FB	FB	FB	FB	FB	FB	FB	FB	FB = fiber 6 μ
FC = fiber 12 μ β >100			FC	FC	FC	FC	FC	FC	FC	FC	FC	FC	FC = fiber 12 μ
FD = fiber 25 μ β >100			FD	FD	FD	FD	FD	FD	FD	FD	FD	FD	FD = fiber 25 μ
CA = cellulose 3 μ β >2			CA	CA	CA	CA	CA	CA	CA	CA	CA	CA	CA = cellul. 3 μ
CC = cellulose 10 μ β >2			CC	CC	CC	CC	CC	CC	CC	CC	CC	CC	CC = cellul. 10 μ
CD = cellulose 25 μ β >2			CD	CD	CD	CD	CD	CD	CD	CD	CD	CD	CD = cellul. 25 μ
MF = metal wire mesh 90 μ			MF	MF	MF	MF	MF	MF	MF	MF	MF	MF	MF = metal 90 μ
CLOGGING INDICATOR													
06 = 1/8" ports, plugged			06	06	06	06	06	06	06	06	06	06	06
31 = pressure gauge, rear connection			31	31	31	31	31	31	31	31	31	31	31
80 = pressure switch, N.O. contacts, 22 psi			80	80	80	80	80	80	80	80	80	80	80
81 = pressure switch, N.C. contacts, 22 psi			81	81	81	81	81	81	81	81	81	81	81
03 = seat for differ. indicator, plugged			-	-	-	-	03	03	03	03	03	03	
50 = differential, visual, 20 psi (1.3 bar)			-	-	-	-	50	50	50	50	50	50	
70 = diff. vis. electrical, 20 psi (1.3 bar)			-	-	-	-	70	70	70	70	70	70	
X ACCESSORIES													
X = no accessory available			X	X	X	X	X	X	X	X	X	X	X

CLOGGING INDICATORS

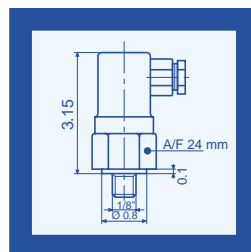
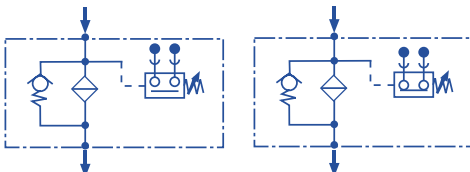
Series 31



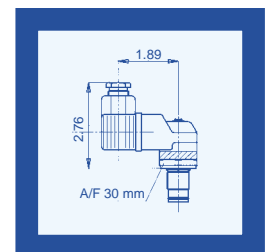
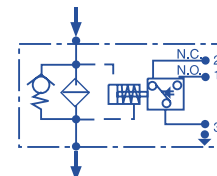
Series 50



Series 80 (N.O. contacts)
& series 81 (N.C. contacts)



Series 70

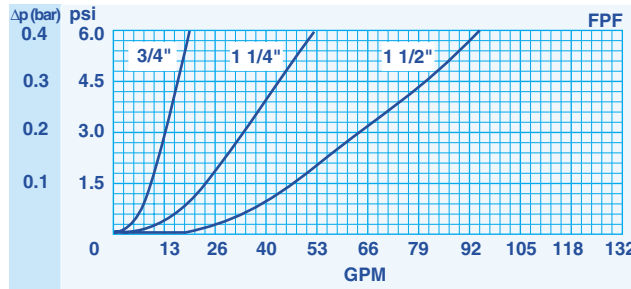


PRESSURE DROP (Δp) CURVES

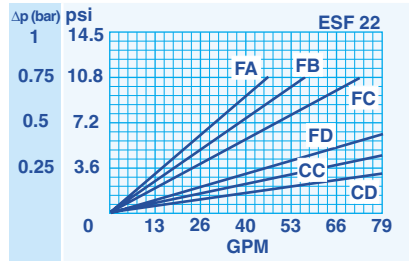
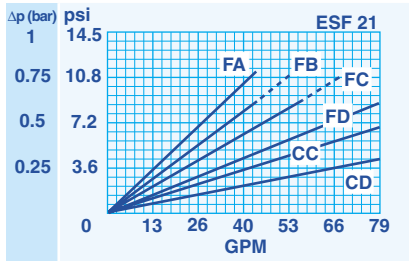
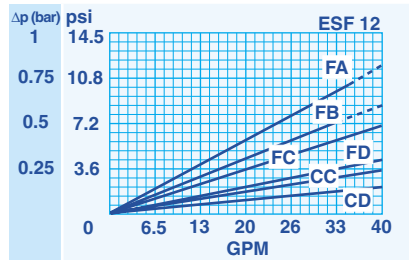
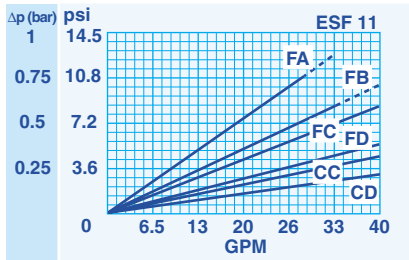
The "Assembly Pressure Drop (Δp)" is obtained by adding the pressure drop values of the filter Housing and of the Clean Filter Element corresponding to the

considered Flow Rate and it must be lower than 7 psi (0,5 bar).

FILTER HOUSING PRESSURE DROP (mainly depending on the port size)



CLEAN FILTER ELEMENT PRESSURE DROP (depending both on the internal diameter of the element and on the filter media)



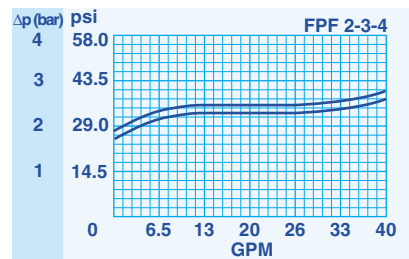
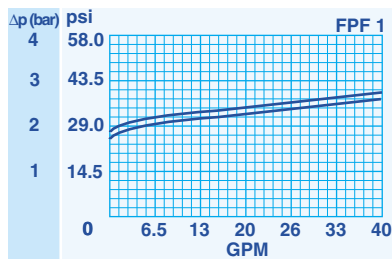
FPF3+ and PPF4+ filters use double element canisters. The Assembly Pressure Drop is therefore determined by adding the Housing Pressure Drop at the real flow rate and half the pressure drop of the ESF2+ element.
e.g. The pressure drop of a complete PPF31----FC--- filter at a 16 GPM flow rate is obtained by adding the Housing Pressure Drop and half the ESF21NFC element pressure drop at 16 GPM.

N.B. All the curves have been obtained with mineral oil having a kinematic viscosity 30 cSt and specific gravity 0.9; for fluids with different features, please consider the factors described in the first part of this catalogue.

BYPASS VALVE PRESSURE DROP

When selecting the filter size, these curves must be taken into account if it is foreseen that any flow peak is to be absorbed by the bypass valve, it also must

be of proper configuration to avoid pressure peaks. The valve pressure drop is directly proportional to fluid specific gravity.

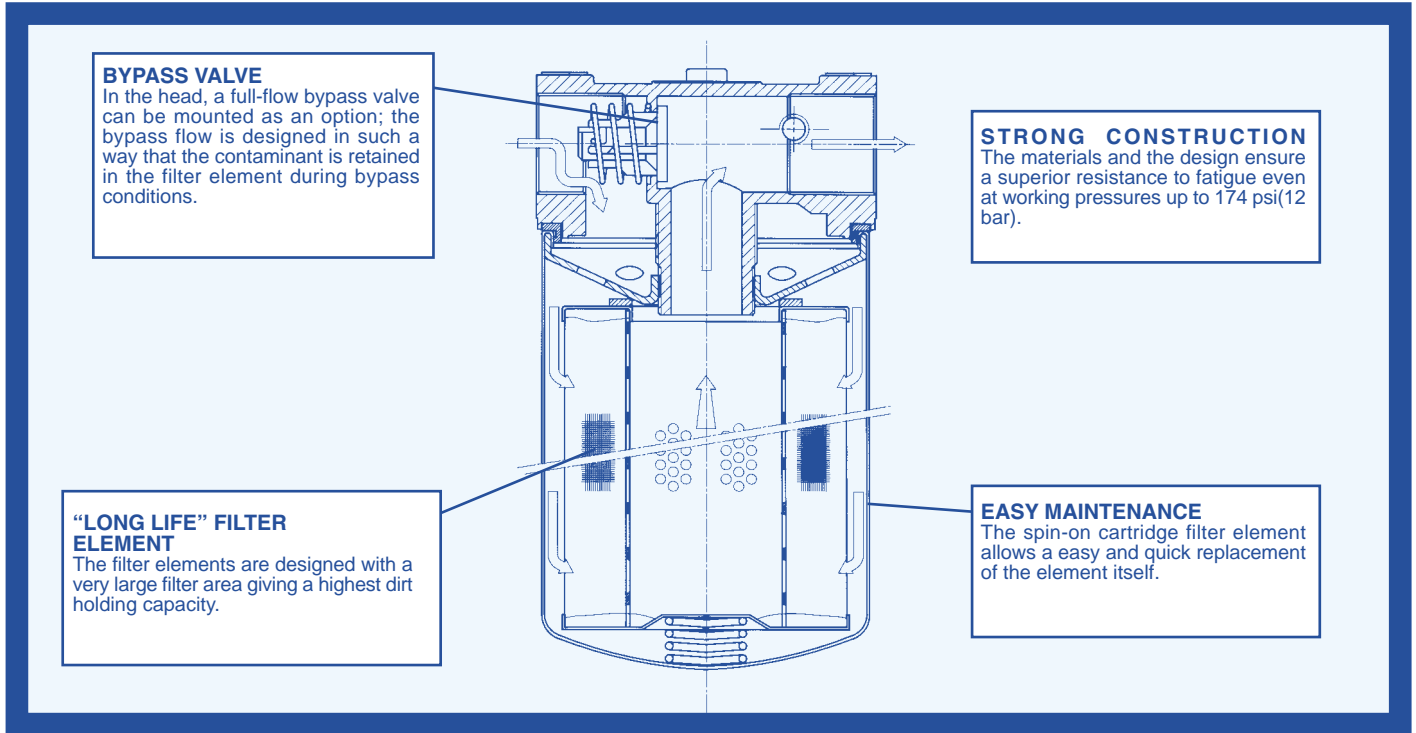


N.B. All the curves are obtained from test done at the UFI HYDRAULIC DIVISION Laboratory, according to the specification ISO 3968. In case of discrepancy, please check the contamination level, viscosity and features of the fluid in use.

PF

"COMPO CARE" PRESSURE FILTERS

CROSS FUNCTIONAL VIEW



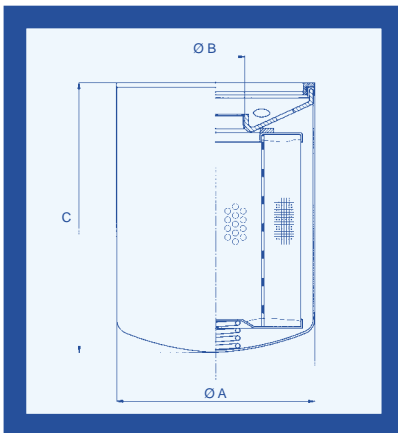
SPARE PARTS ORDERING INFORMATION

(from the code of the complete filter, fill the digits corresponding to the boxes)

Head
Seal kit

B P F X X X X
S P F X X X X X X X X X X

DIMENSIONS OF THE FILTER ELEMENT



Type	A	B	C	Area (in ²)	
				Media F+	Media C+
E SF11	3.80	1" 12 UNF	5.75	331.7	512.3
E SF12	3.80	1" 12 UNF	7.52	562.7	735.5
E SF21	5.08	1 1/2" 16 UNF	6.93	615.4	768.8
E SF22	5.08	1 1/2" 16 UNF	10.71	1,091.2	1,364.0

Technical data subject to variations without prior notice. PF - USA - 11/2003

UFI Universal Filter International - Hydraulic Division: 9337 Ravenna Road, Unit G - Twinsburg, OH 44087
Phone (330) 4051800 - Fax (330) 4051801 - E-mail: sales@uhiltd.com

UFI HYDRAULIC DIVISION - PLANET FILTERS S.p.A.
via S.Chierico, 24 - 24060 Bolgare BG - Tel. 035 4493831 - Fax 035 843743
e-mail: info@planetfilters.it - http://www.ufifilter.com

COMPANY
WITH QUALITY SYSTEM
CERTIFIED BY DNV
=ISO 9001/2000=

COMPANY WITH
ENVIRONMENTAL MANAGEMENT
SYSTEM CERTIFIED BY DNV
=ISO 14001=