

"TANK CARE" - Return filters

RB



TECHNICAL DATA

ORDERING AND OPTIONS CHART

CLOGGING INDICATORS

PRESSURE DROP (Δp) CURVES

CROSS FUNCTIONAL VIEW

SPARE PARTS ORDERING INFORMATION

DIMENSIONS OF THE FILTER ELEMENT

RB

"TANK CARE" RETURN FILTERS

MATERIALS

Head	Aluminium alloy
Cover & bowl	Polyamide
Bypass valve	Polyamide
Seals	Nitrile (NBR) (Viton® FPM on request)
Indicator housing	Brass

COMPATIBILITY

Full with fluids:
 HH-HL-HM-HR-HV-HG
 (according to ISO 6743/4).
 For fluids different than the above mentioned,
 please contact our Sales Department.

PRESSURE

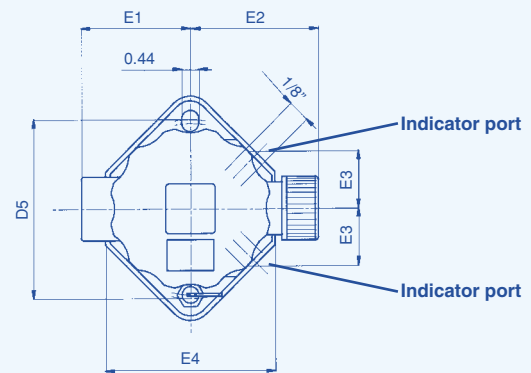
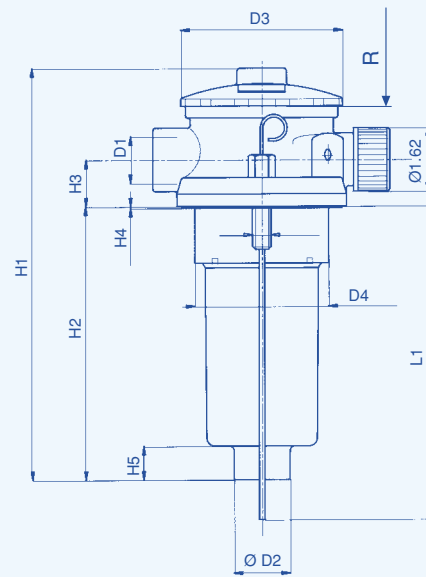
Max working	100 psi (7 bar)
Test	145 psi (10 bar)
Bursting	300 psi (21 bar)
Collapse, differential for the filter element	45 psi (3 bar)

BYPASS VALVE

Setting	25 psi (1.7 bar) +/-10%
---------	----------------------------

WORKING TEMPERATURE

From -15° to +230° F



Tank cut out = D4 + 0.04 inches.

	D1	D2	D3	D4	D5	E1	E2	E3	E4	H1	H2	H3	H4	H5	L1	R	Weight lbs	(*) NG DIN	
FRB11	1/2" ÷ 3/4"	1.10	2.95	2.36	3.22 3.46	1.97	2.76	1.10	3.03	9.57	7.01	0.94	0.08	0.63	14.96	8.66	0.85		
FRB21	3/4" ÷ 1"	1.42	4.09	3.45	4.33 ÷ 4.52	2.76	3.27	1.46	4.06	7.87	4.33	1.18	0.06	0.87	14.56		7.48	1.78	
FRB22										10.43	6.89						9.45	1.84	
FRB23										14.37	10.83						13.78	1.94	
FRB31(*)										10.00	6.49						1.57	1.87	063
FRB32(*)										13.54	10.03						13.77	1.98	100

(*) Filters according to specification DIN 24550

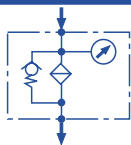
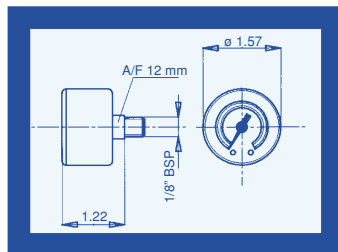
RB

"TANK CARE" RETURN FILTERS

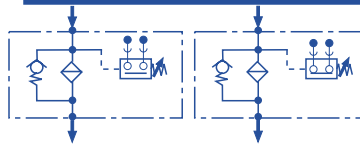
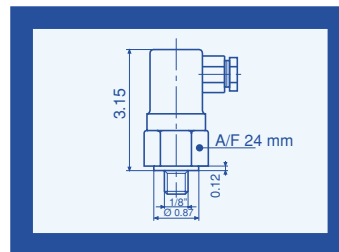
ORDERING AND OPTIONS CHART

F FILTER COMPLETE								ELEMENT	E
R	B							FAMILY SIZE & LENGTH	
FAMILY NOMINAL SIZE & LENGTH		11	21	22	23	31	32		
PORT TYPE									
B = BSP thread		B	B	B	B	B	B		
N = NPT thread		N	N	N	N	N	N		
S = SAE thread		S	S	S	S	S	S		
PORT SIZE									
04 = 1/2"		04	=	=	=	=	=		
06 = 3/4"		06	06	06	06	06	=		
08 = 1"		=	08	08	08	=	08		
BYPASS VALVE									
B = 25 psi (1.7 bar) - 36 psi (2.5 bar) for media F+		B	B	B	B	B	B		
SEALS								SEALS	
N = nitrile NBR		N	N	N	N	N	N	N = NBR	
F = Viton® FPM		F	F	F	F	F	F	F = FPM	
FILTER MEDIA								FILTER MEDIA	
FA = fiber 3μ β>200		FA	FA	FA	FA	FA	FA	FA = fiber 3μ	
FB = fiber 6μ β>200		FB	FB	FB	FB	FB	FB	FB = fiber 6μ	
FC = fiber 12μ β>200		FC	FC	FC	FC	FC	FC	FC = fiber 12μ	
FD = fiber 25μ β>200		FD	FD	FD	FD	FD	FD	FD = fiber 25μ	
CC = cellulose 10μ β>2		CC	CC	CC	CC	CC	CC	CC = cellulose 10μ	
CD = cellulose 25μ β>2		CD	CD	CD	CD	CD	CD	CD = cellulose 25μ	
CLOGGING INDICATORS									
05 = nr. 2 x 1/8" ports, plugged		05	05	05	05	05	05		
30 = pressure gauge, rear connection		30	30	30	30	30	30		
80 = pressure switch, N.O. contact		80	80	80	80	80	80		
81 = pressure switch, N.C. contact		81	81	81	81	81	81		
86 = pressure switch, N.O. contact		86	86	86	86	86	86		
87 = pressure switch, N.C. contact		87	87	87	87	87	87		
P1 = SPDT, pressure switch		P1	P1	P1	P1	P1	P1		
P6 = SPDT, pressure switch		P6	P6	P6	P6	P6	P6		
ACCESSORIES									
W = without		W	W	W	W	W	W		
C = with paper air filter		C	C	C	C	C	C		
D = with metal air filter		D	D	D	D	D	D		
E = with "C" air filter + dipstick		E	E	E	E	E	E		
H = with "D" air filter + dipstick		H	H	H	H	H	H		

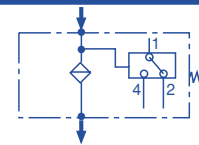
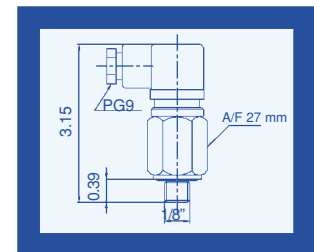
CLOGGING INDICATORS



Series 30
(rear connection)
pressure gauge,
scale 0 - 87 psi (0 - 6 bar)



**Series 80 & 86 (N.O. contacts)
& series 81 & 87 (N.C. contacts):**
pressure switch, max voltage 220 V ACX 50-60 Hz
max current 0.5A resistive, 0.25A inductive -
switching power 100VA, setting 22 psi (1.5 bar) for
80 & 81, setting 29 psi (2 bar)
for 86 & 87 - protection IP65



**Series P1
& Series P6:**
SPDT, pressure switch
max voltage 250V - 50Hz - max current 6A
resistive, 1A inductive - protection IP65
setting 22 psi (1.5 bar) for P1
setting 29 psi (2 bar) for P6

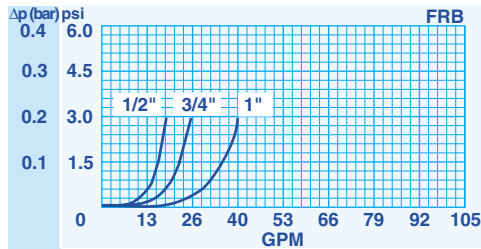
86, 87 and P6 to be used with F+ elements only.

PRESSURE DROP (Δp) CURVES

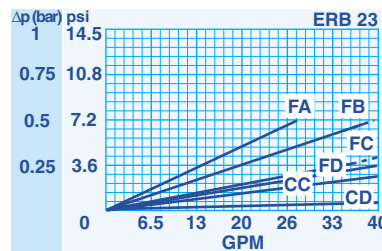
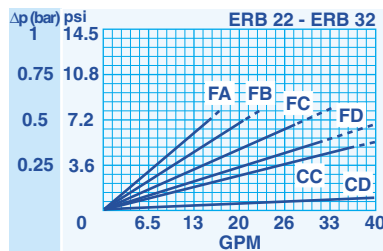
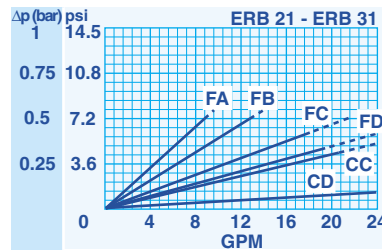
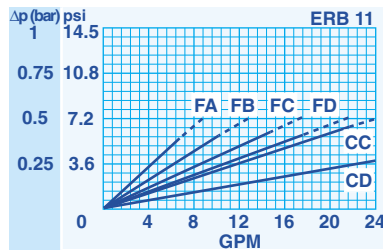
The "Assembly Pressure Drop (Δp)" is obtained by adding the pressure drop values of the Filter Housing and of the Clean Filter Element corresponding to the

considered Flow Rate and it must be lower than 7 psi (0.5 bar).

FILTER HOUSING PRESSURE DROP (mainly depending on the port size)



CLEAN FILTER ELEMENT PRESSURE DROP (depending both on the internal diameter of the element and on the filter media)

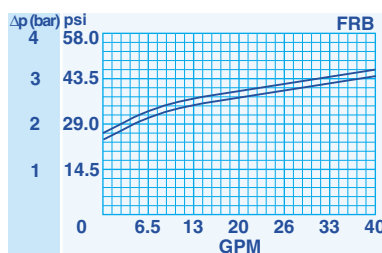


N.B. All the curves have been obtained with mineral oil having a kinematic viscosity 30 cSt and specific gravity 0.9 ; for fluids with different features, please consider the factors described in the first part of this catalogue.

BYPASS VALVE PRESSURE DROP

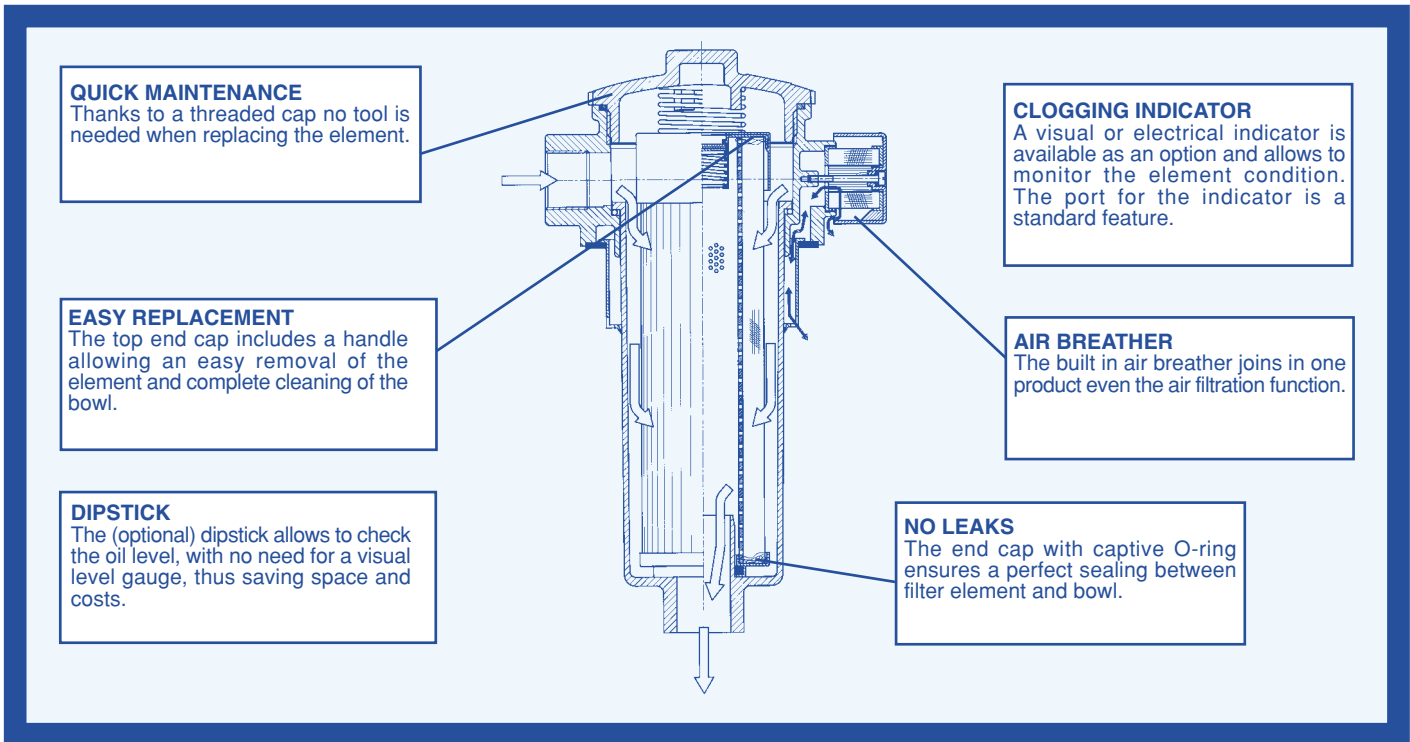
When selecting the filter size, these curves must be taken into account if it is foreseen that any flow peak is to be absorbed by the bypass valve, it also must

be of proper configuration to avoid pressure peaks. The valve pressure drop is directly proportional to fluid specific gravity.



N.B. All the curves are obtained from test done at the UFI HYDRAULIC DIVISION Laboratory, according to the specification ISO 3968. In case of discrepancy, please check the contamination level, viscosity and features of the fluid in use.

CROSS FUNCTIONAL VIEW

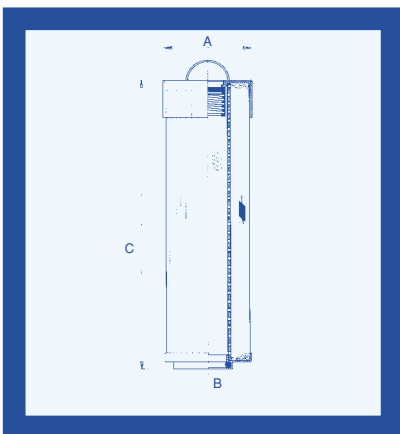


SPARE PARTS ORDERING INFORMATION

(from the code of the complete filter, fill the digits corresponding to the boxes)

Filter housing	B	R	B	<input type="checkbox"/>	<input type="checkbox"/>	<input type="checkbox"/>	<input type="checkbox"/>	<input type="checkbox"/>	<input type="checkbox"/>	<input type="checkbox"/>	X	X	<input type="checkbox"/>	<input type="checkbox"/>	<input type="checkbox"/>
Cover	S	R	B	<input type="checkbox"/>	X	X	X	X	X	<input type="checkbox"/>	X	X	<input type="checkbox"/>	<input type="checkbox"/>	<input type="checkbox"/>
Head	S	R	B	<input type="checkbox"/>	X	<input type="checkbox"/>	<input type="checkbox"/>	<input type="checkbox"/>	X	<input type="checkbox"/>	X	X	X	X	X
Bowl	S	R	B	<input type="checkbox"/>	<input type="checkbox"/>	X	X	X	X	<input type="checkbox"/>	X	X	X	X	X
Seal kit	S	R	B	<input type="checkbox"/>	X	X	X	X	X	<input type="checkbox"/>	X	X	X	X	X

DIMENSIONS OF THE FILTER ELEMENTS



Type	(*) NG DIN	A	B	C	Area (in ²)	
					Media F+	Media C+
ERB 11		1.69	0.79	7.87	189.9	189.9
ERB 21		2.32	1.10	5.28	232.5	232.5
ERB 22		2.32	1.10	7.87	355.7	355.7
ERB 23		2.32	1.10	11.81	541.7	541.7
ERB 31	063	2.20	1.25	6.29	64.96	64.96
ERB 32	100	2.20	1.25	9.84	103.9	103.9

UFI Universal Filter International - Hydraulic Division: 9337 Ravenna Road, Unit G - Twinsburg, OH 44087
Phone (330) 4051800 - Fax (330) 4051801 - E-mail: sales@uhilt.com

UFI HYDRAULIC DIVISION - PLANET FILTERS S.p.A.
via S.Chierico, 24 - 24060 Bolgare BG - Tel. 035 4493831 - Fax 035 843743
e-mail: info@planetfilters.it - http://www.ufifilter.com

COMPANY
WITH QUALITY SYSTEM
CERTIFIED BY DNV
=ISO 9001/2000=

COMPANY WITH
ENVIRONMENTAL MANAGEMENT
SYSTEM CERTIFIED BY DNV
=ISO 14001=